

# Funeral Care, your way



PRICING INFORMATION APRIL 2020



**At Saint and Forster we are committed to clear and ethical pricing with no 'hidden charges'. You pay for exactly what you want and no more. We will never try to pressure you into buying something you do not want or need.**

We believe that our funerals offer excellent value for money. We give our full care and attention to every funeral we do, and we will do everything we can to ensure that the funeral goes smoothly and becomes an important and positive family memory. We use a Mercedes hearse as standard, and we have a large chapel and large comfortable sitting room which we invite you to use as an extension of your own home while we are working with you. Because we have no middle management and few employees we can offer excellent prices without compromising on the quality of service we are able to provide.

Before you decide on a funeral director we recommend that you speak to at least three, not only to compare prices but also make sure that you feel comfortable with the person you are dealing with. Until you make a decision we will be pleased to give you any help or advice you need.



**SAINT & FORSTER**  
FUNERAL CARE...YOUR WAY!

[www.saintandforster.co.uk](http://www.saintandforster.co.uk)

Please scroll through the pages below to view our price list.

# SIMPLE ELEGANCE



We believe that the true value of a funeral, and the power of the memories that it creates lie in the people who attend and in the things that are said and done. The Simple Elegance is designed to offer a service that is simple and affordable, but also dignified and meaningful. Unlike most 'simple service' options offered by funeral directors it does offer full access to the Chapel of Rest between 9am and 7pm on weekdays and between 10am and 2pm at weekends. Please see the full price list for an explanation of what is included under 'Professional Services and 'Daily Care of the Deceased.'

Usually with the Simple Elegance the family would meet at the crematorium, however it is possible to arrange for the hearse to leave from a family address for an additional cost of £100.

**Where the account is settled in full prior to the date of the funeral, we are able to offer a concession of £100.**

## Funeral Director's Charges

Professional Services..... £360

Care of the Deceased ..... £1,100

Including Mercedes Hearse and necessary staff on the day of the funeral  
(£1,100 if hearse leaves from a family address)

Simple Coffin ..... £230

(Light Oak Veneered Coffin with Polished Gold Effect Handles)

..... £1,690

## Disbursements (Paid by us on your behalf)

Cremation Fee (Darlington) ..... £900

Doctors' Fees ..... £82

Minister/Celebrant's Fee..... £200

..... £1,182

Total: ..... £2,872

Total with £100 discount for early payment:.....£2,772

# INSPIRED BY YOU



This service is designed to give you as much freedom and choice as possible to design the funeral that is right for you. Whether you wish to create a green funeral in a natural burial ground, design a picture coffin that reflects the life of the person who has died, or plan a traditional funeral with a cortege leaving from your home. The emphasis is on choice.

We will discuss any ideas you have about creating a unique memory and explain all of your options to you. This service includes unlimited access to our Chapel of Rest between 9am and 7pm on weekdays and between 10am and 2pm at weekends. As this funeral includes a variety of options and choices the example set out below is designed only to give an idea of prices. All funerals will be priced individually according to your choices.

**We offer a discount of £100 on this service if the full amount is paid prior to the date of the funeral.**

## Funeral Director's Charges

Professional Services ..... £360

Care of the Deceased ..... £1,200

(Including Mercedes Hearse and necessary staff on the day of the funeral)

Simple Coffin ..... £230

(Light Oak Veneered Coffin with Polished Gold Effect Handles)

Mercedes Limousine ..... £150

.....£1,940

## Disbursements (Paid by us on your behalf)

Cremation Fee (Darlington) ..... £900

Doctors' Fees ..... £82

Minister/Celebrant's Fee..... £200

.....£1,182

**Total: ..... £3,122**

**Total with £100 discount for early payment:.....£3,022**

# OPTIONS & PRICES



If you are interested in anything that is not listed here, please ask us and we will give you any advice you may need and a price.

## Part 1 - Professional Services

- Provision of the Funeral Director's services, including advice, guidance and support.
- Payment of Funeral Fees to third parties in advance of the funeral taking place.
- Making all the necessary arrangements for a burial or cremation service.
- Liaison with hospitals, doctors, coroner, clergy and other third parties.
- Completion of all the required documentation.
- Dealing with charitable donations on behalf of the family if required.

**£360**

## Part 2 - Care of the Deceased

- Conveyance of the deceased into our care during normal working hours.
- Preparation and presentation of the deceased.
- Daily care of the deceased prior to the funeral.
- Use of our private rest room.
- Visiting the deceased by appointment.
- Provision of Mercedes Hearses and all necessary staff on the day of the funeral (other forms of transportation are available, please ask us).
- Leaving from a family address (additional fee of £100)

**£1,100**

## Part 3 - Embalming

- Embalming Service..... **£75**

This service is usually not needed.

If we feel that it would be appropriate we will discuss this with you fully when you make the funeral arrangements.

## Part 4 - Coffin and Casket Selection

### TRADITIONAL

- Simple Light Oak Veneered..... **£230**
- Custom Stained Veneered..... from **£280**
- Solid Wood (Oak)..... from **£610**
- Solid Wood Caskets ..... from **£1,300**
- Caskets for Cremated Remains ..... from **£75**
- Strewing Tubes..... **£25**

### ECOLOGICAL AND CUSTOM

- Bamboo 'Oasis' ..... from **£600**
- Cardboard with Plywood Base ..... **£230**
- Woollen ..... from **£725**
- Willow ECO ..... from **£505**
- Picture Design ..... from **£540**

*All wood and wood effect coffins are from FSC managed woodlands. Other styles of coffin are available.*

# OPTIONS & PRICES



## Part 5 - Additional Services

- Provision of a limousine.....**£150 each**
- Conveyance of the deceased into our care outside working hours .....**£180**
- Reception into church.....**£350**
- Reception into home  
In Estate car .....**£225**  
Using Hearse and Bearers .....**£350**  
Additional mileage charge over 20 miles.  
Cost per mile .....**95p**
- Video Tribute from .....**£100**
- Provision of Service Sheets.....**£80 for 50**
- Provision of Memorial Book.....**£45**
- Administration fee for organising transportation of cremated remains by courier.....**£25**

## Part 6 –Disbursement Charges

(Payments which are made by us on your behalf)

### CREMATION CHARGES:

Darlington Crematorium .....	<b>£900</b>
Wear Valley Crematorium.....	<b>£884</b>
Durham Crematorium.....	<b>£700</b>
Teesside Crematorium.....	<b>£790</b>
Clergy/Celebrant fees from.....	<b>£200</b>
Organist from.....	<b>£45</b>
Doctors fees .....	<b>£164</b>

Newspaper announcements are charged at the cost price if required.

### BURIAL CHARGES:

Purchase of a grave in Darlington .....	<b>£ 900</b>
Grave Preparation .....	<b>£ 900</b>
Church fees from .....	<b>£ 250</b>

Newspaper announcements are charged at the cost price if required.

# A SIMPLE GOODBYE



**This service is designed to provide a very simple, dignified funeral at an affordable price. It is only available for cremation funerals and it is not possible to add anything on to this service other than an obituary. There may be some restrictions on times and dates available for the funeral.**

The cost includes a simple light oak veneer coffin with gold handles, collection of the deceased from a local hospital and daily care of the deceased, and access to our Chapel of Rest, by appointment, between 9am and 7pm on weekdays and between 10am and 2pm at weekends. The coffin will be in place at the crematorium chapel when you arrive for the service.

Please note that there will be an additional charge of £180.00 for collection of the deceased from an address other than a local hospital.

**We ask for full payment prior to the date of the funeral for this service**

## **FUNERAL DIRECTOR'S CHARGES**

Professional Services ..... **£1000**

## **DISBURSEMENTS** (Paid by us on your behalf)

Cremation Fee (Darlington) ..... **£900**

Doctors' Fees ..... **£82**

Service conducted by Rev. G Callander FRSA

(Open Free Church) ..... **£100**

**Total: ..... £2,082**



## **SAINT & FORSTER**

**FUNERAL CARE...YOUR WAY!**

[www.saintandforster.co.uk](http://www.saintandforster.co.uk)

# A NATURAL GOODBYE



**This service is designed to offer a simple, affordable and ecological funeral at a local natural burial site.**

The cost includes access to our Chapel of Rest, by appointment, between 9am and 7pm on weekdays and between 10am and 2pm at weekends.

Please note that there will be an additional charge of £180.00 for collection of the deceased from an address other than a local hospital.

For burial sites that require us to travel a significant distance out of the area we may make an additional charge for mileage, which will be agreed with the family in advance.

**Where the account is settled in full prior to the date of the funeral, we are able to offer a concession of £100.**

## **FUNERAL DIRECTOR'S CHARGES**

Professional Services ..... **£1,600**  
Including provision of an estate car and all necessary staff on the day of the funeral  
(Other forms of transportation are available for an additional fee, please ask us)

Provision of Cardboard Coffin with Plywood Base and Hemp Handles. .... **£230**  
(Other coffins are available, prices on request)

**Total: .....£1,830**

## **DISBURSEMENTS** (Paid by us on your behalf)

Clergy or Celebrant's Fee ..... **£200**  
Natural Burial Ground Fees  
These vary depending on the natural burial ground you have chosen.

**Total: ..... Ask for details**

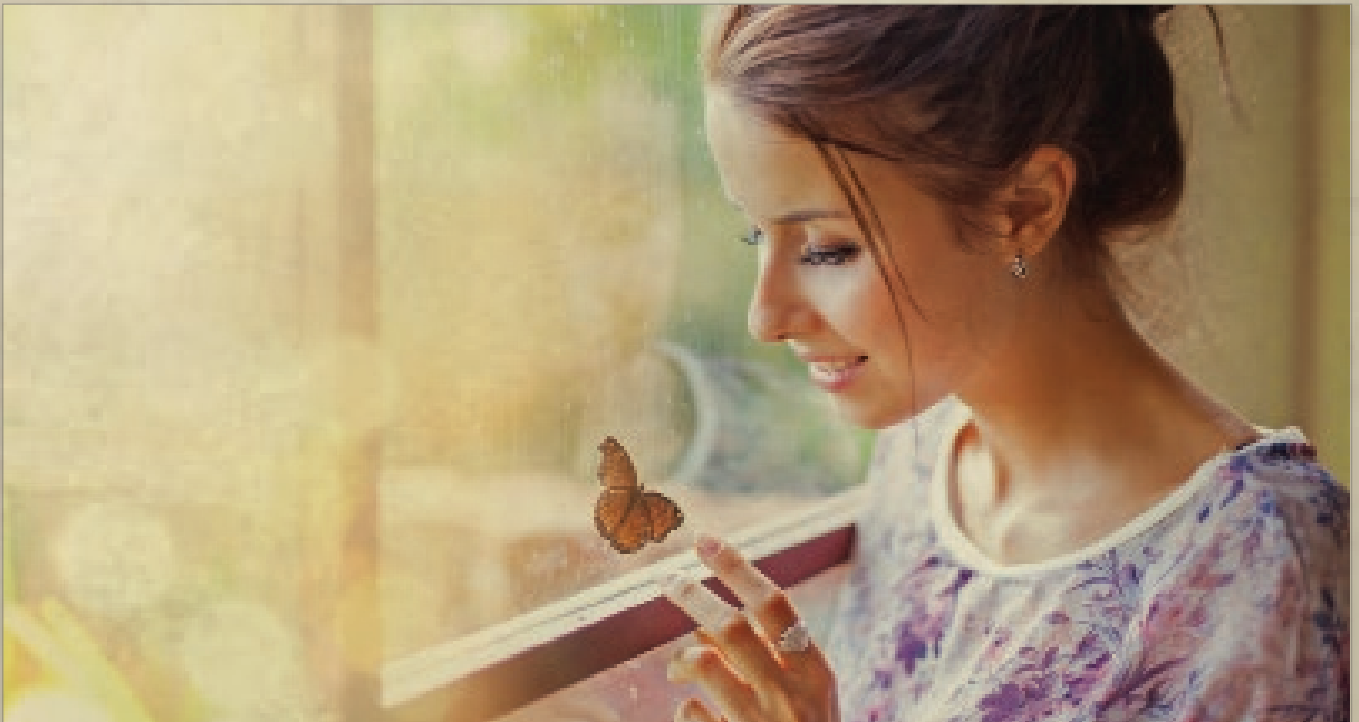


## **SAINT & FORSTER**

**FUNERAL CARE...YOUR WAY!**

[www.saintandforster.co.uk](http://www.saintandforster.co.uk)

# A FUNERAL WITH NO FUSS



**This service is designed for people who would prefer not to hold a traditional funeral at all, perhaps choosing instead to hold a memorial event at a later date. We will provide a cheap, no-fuss funeral that does not compromise our usual high standards of care and respect. You will often see this type of service referred to as 'direct cremation'.**

The cost includes a simple light oak veneer coffin, collection of the deceased from a local hospital, daily care of the deceased, transportation of the deceased from our premises to Darlington crematorium on the day of the cremation in an estate car at a time convenient for us.

If you would like to visit the chapel of rest or witness the reception of the coffin into the crematorium chapel this can be arranged, but additional charges will be payable, and there will be an increased price at the crematorium.

Please note that there will be an additional charge of £180.00 for collection of the deceased from an address other than a local hospital.

In addition to this we may charge for travel outside the Darlington area. The amount will be agreed in advance with the family depending on distance.

If cremated remains are to be sent by courier to an address within the UK there will be a charge of £125.

In the event that extra bearers are required due to the weight of the coffin, we reserve the right to make a surcharge of £100.

**Please be clear that this service is for cremation at a time of our choosing with no service and no family present.**

**We ask for full payment prior to the date of the funeral for this service**

## **FUNERAL DIRECTOR'S CHARGES**

Professional Services ..... **£600**

## **DISBURSEMENTS** (Paid by us on your behalf)

Cremation Fee (Darlington) ..... **£700**

Doctors' Fees ..... **£82**

**Total: ..... £1,382**



## **SAINT & FORSTER**

**FUNERAL CARE...YOUR WAY!**

[www.saintandforster.co.uk](http://www.saintandforster.co.uk)



# PAYMENT TERMS & CONDITIONS



## **Our Payment Terms**

We will provide an estimate of the total cost of the funeral at the time of the arrangements. We will ask you to pay the disbursements plus a proportion of our fees prior to the funeral and this must be received before the funeral takes place. If you choose to settle the full account prior to the funeral there will be a concession of £100 (this does not apply to the 'No Fuss' or 'Simple Goodbye' funerals, which must be fully paid prior to the funeral taking place). Where possible, settlement is requested within 14 days of the invoice date but please feel free to discuss any questions or concerns with us. You will be asked to confirm with the funeral director how you intend to pay for the funeral during the arrangements and you will be asked to sign an arrangement form confirming that you accept financial responsibility for the funeral.

If you make an application to the DWP for financial support and the application is unsuccessful it is important that you understand you will still be financially liable for the cost of the funeral. Please be aware that if you default on payments arranged with us, we reserve the right to pass your details to our accounts management partners and to recover from you any expenses that we incur in this process.

We accept all major credit and debit cards, as well as direct cash transfer.

## **Further information**

We can provide further advice and assistance with a variety of services including floral tributes, orders of service and attendance/thankyou cards, catering, specialist modes of transport and memorials. We can consult with you to find a celebrant that is the best fit for you and your family. We can also provide information and advice on a number of options, some of which you may not be aware of. For further information please look at our website and or call Keith or Jenny and we will take as much time as you need to discuss your requirements at length, and work with you to help you create a funeral that reflects and celebrates the life of your loved one in the way that means the most to you. We can also arrange for a full national and global repatriation service, please contact us to discuss your requirements and prices.

Our advice is always free and if you wish to meet with us we can make an appointment either at our office or, if you prefer, in the comfort of your own home.

## **Contact us**

If we can be of further assistance please do not hesitate to call Keith or Jenny on **01325 485111** or visit our website at [www.saintandforster.co.uk](http://www.saintandforster.co.uk)



# SAINT & FORSTER

FUNERAL CARE...YOUR WAY!



Saint & Forster will help you celebrate wonderful lives,  
the inspiring things we all do  
and the little things that make us unique.



3-5 Thompson Street East, Darlington, DL1 3BA.  
Tel: 01325 485111 or 0750 6209 666  
email enquiries@saintandforster.co.uk  
www.saintandforster.co.uk